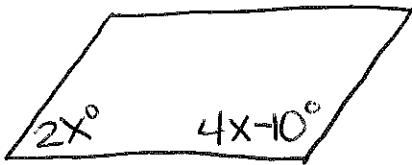


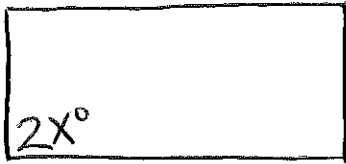
①



parallelogram  
solve for x.

$$\begin{aligned} 6x - 10 &= 180 \\ 6x &= 190 \\ x &= \boxed{31.67} \end{aligned}$$

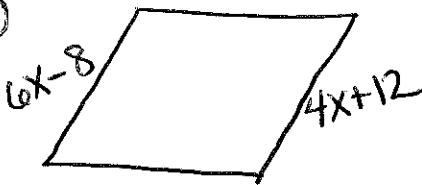
②



Rectangle  
solve for x.

$$\begin{aligned} 2x &= 90 \\ x &= \boxed{45} \end{aligned}$$

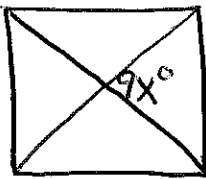
③



Rhombus  
solve for x.

$$\begin{aligned} 6x - 8 &= 4x + 12 \\ -4x + 8 & \quad -4x + 8 \\ \hline 2x &= 20 \\ x &= \boxed{10} \end{aligned}$$

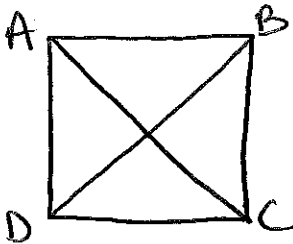
④



square  
solve for x.

$$\begin{aligned} 9x &= 90 \\ x &= \boxed{10} \end{aligned}$$

⑤



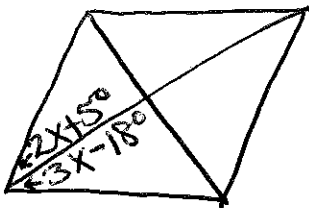
square

$$AC = 10x - 2 \quad BD = 5x - 7$$

solve for x.

$$\begin{aligned} 10x - 2 &= 5x - 7 \\ -5x + 2 & \quad -5x + 2 \\ \hline 5x &= -5 \\ x &= \boxed{-1} \end{aligned}$$

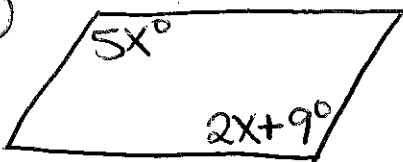
⑥



Rhombus  
solve for x.

$$\begin{aligned} 2x + 5 &= 3x - 18 \\ -2x + 18 & \quad -2x + 18 \\ \hline 23 &= x \end{aligned}$$

⑦



parallelogram  
solve for x.

$$\begin{aligned} 5x &= 2x + 9 \\ -2x & \quad -2x \\ \hline 3x &= 9 \\ \frac{3x}{3} & \quad \frac{9}{3} \\ x &= \boxed{3} \end{aligned}$$

Name : HIRSCH