

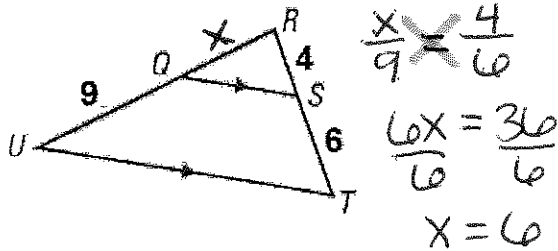
Proportions and Parallel Lines

Name: _____

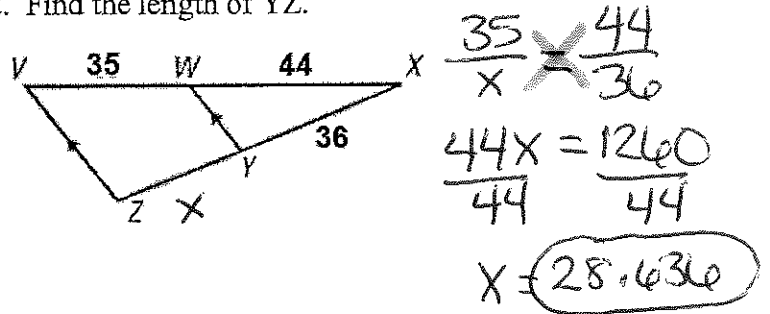
Triangle Proportionality Theorem

If a line parallel to one side of a **triangle** intersects the other two sides of the **triangle**, then the line divides these two sides proportionally.

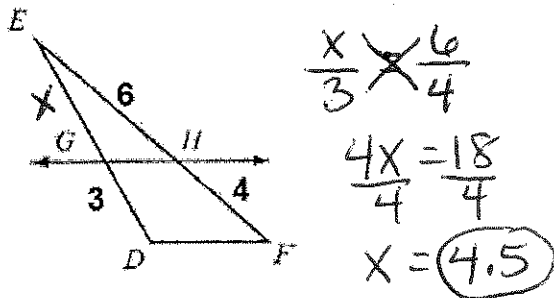
1. Find the length of RQ.



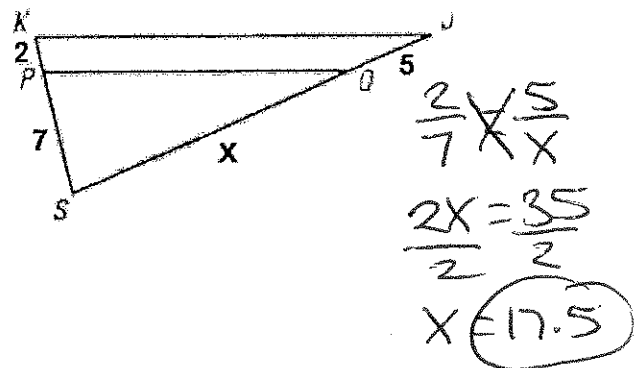
2. Find the length of YZ.



3. Given GH // DF, find the length of GE.



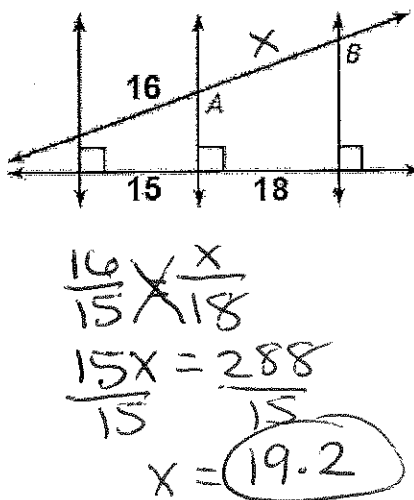
4. Find the value of x given PQ // KJ



Parallel lines divide a transversal proportionally

If three or more parallel lines intersect two transversals, then they cut off the transversals proportionally.

5. Find the length of AB.



6. Find the value of x.

